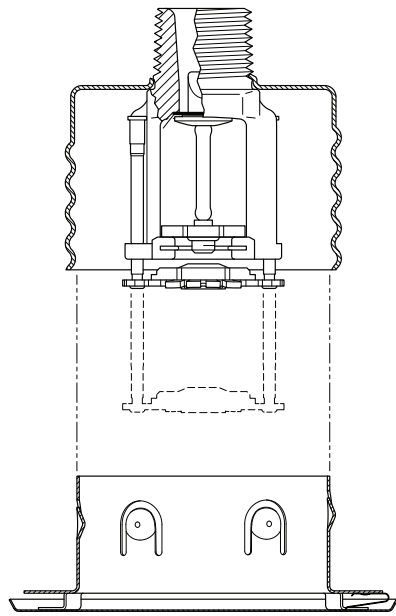


# Price Book - Section 4 Residential Products

Effective Date  
November 1, 2021

## LFII - Residential Flat-Plate Concealed Pendent Sprinkler, Wet Pipe System, K=4.9, 1/2" N.P.T.

40 Box Quantity, 20 lbs/box (SIN TY2534)



**Note: All "Special Order" cover plates are special ordered and are Non-Returnable. Please see "Terms & Conditions"**

C.O.	Number	Finish	Temperature	List Price
	<b>51-549-1-155</b>	Brass	155°F (68°C)	\$81.00
	<b>51-549-1-200</b>	Brass	200°F (93°C)	\$81.00
<b>Cover Plates (Order Separately) (For use with 155° F Sprinkler)</b>				
▶	<b>56-891-0-135</b>	Ivory (RAL1015)	135°F (57°C)	\$33.25
	<b>56-891-1-135</b>	Brass	135°F (57°C)	\$33.25
▶	<b>56-891-2-135</b>	Beige (RAL1001)	135°F (57°C)	\$33.25
▶	<b>56-891-3-135</b>	Pure White (RAL9010)	135°F (57°C)	\$33.25
	<b>56-891-4-135</b>	Signal White (RAL9003)	135°F (57°C)	\$33.25
	<b>56-891-5-135</b>	Grey White (RAL9002)	135°F (57°C)	\$33.25
▶	<b>56-891-6-135</b>	Terra Brown (RAL8028)	135°F (57°C)	\$33.25
	<b>56-891-7-135</b>	Black (RAL9005)	135°F (57°C)	\$33.25
	<b>56-891-8-135</b>	Brushed Brass	135°F (57°C)	\$74.25
	<b>56-891-9-135</b>	Brushed Chrome	135°F (57°C)	\$54.00
	<b>56-891-9-135B</b>	Bright Chrome	135°F (57°C)	\$54.00
▶	<b>56-891-X-135</b>	Special Order*	135°F (57°C)	\$33.25
<b>Cover Plates (Order Separately) (For use with 200° F Sprinkler)</b>				
▶	<b>56-891-0-165</b>	Ivory (RAL1015)	165°F (74°C)	\$33.25
	<b>56-891-1-165</b>	Brass	165°F (74°C)	\$33.25
▶	<b>56-891-2-165</b>	Beige (RAL1001)	165°F (74°C)	\$33.25
▶	<b>56-891-3-165</b>	Pure White (RAL9010)	165°F (74°C)	\$33.25
	<b>56-891-4-165</b>	Signal White (RAL9003)	165°F (74°C)	\$33.25
	<b>56-891-5-165</b>	Grey White (RAL9002)	165°F (74°C)	\$33.25
▶	<b>56-891-6-165</b>	Terra Brown (RAL8028)	165°F (74°C)	\$33.25
	<b>56-891-7-165</b>	Black (RAL9005)	165°F (74°C)	\$33.25
	<b>56-891-8-165</b>	Brushed Brass	165°F (74°C)	\$74.25
	<b>56-891-9-165</b>	Brushed Chrome	165°F (74°C)	\$54.00
	<b>56-891-9-165B</b>	Bright Chrome	165°F (74°C)	\$54.00
▶	<b>56-891-X-165</b>	Special Order*	165°F (74°C)	\$33.25
<b>Accessories</b>				
	<b>56-000-1-300</b>	Cover Plate Installation Tool		\$40.75
	<b>91-201-1-015</b>	Protective Cap		\$0.60
<b>Sprinkler Wrench</b>				
	<b>56-000-1-079</b>	W-Type 42 Wrench		\$121.50
<b>Options</b>				
	<b>6012</b>	*Special Order paint match subject to set-up charge. (Net Price).		\$450.00
<b>Technical Data Sheet: TFP446 Design Guide: TFP490</b>				

Items marked "C.O." are made to order and may require longer delivery times. Please contact customer service for availability.

See latest Technical Data Sheets for specific Approvals, Listings, Design Parameters & available finishes. Sprinkler heads & escutcheons are priced separately unless otherwise noted.